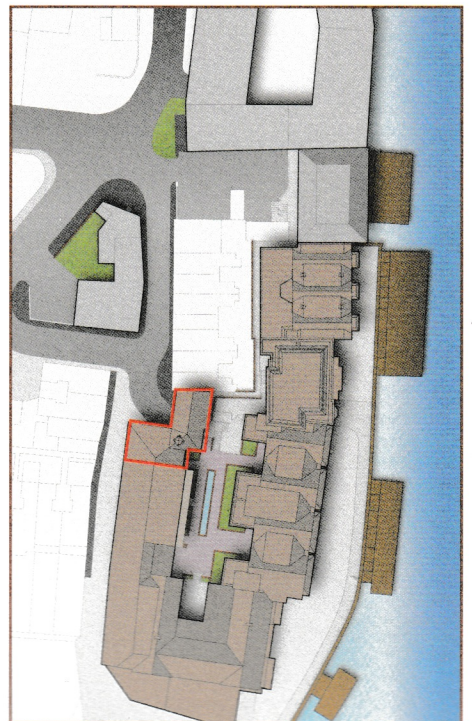
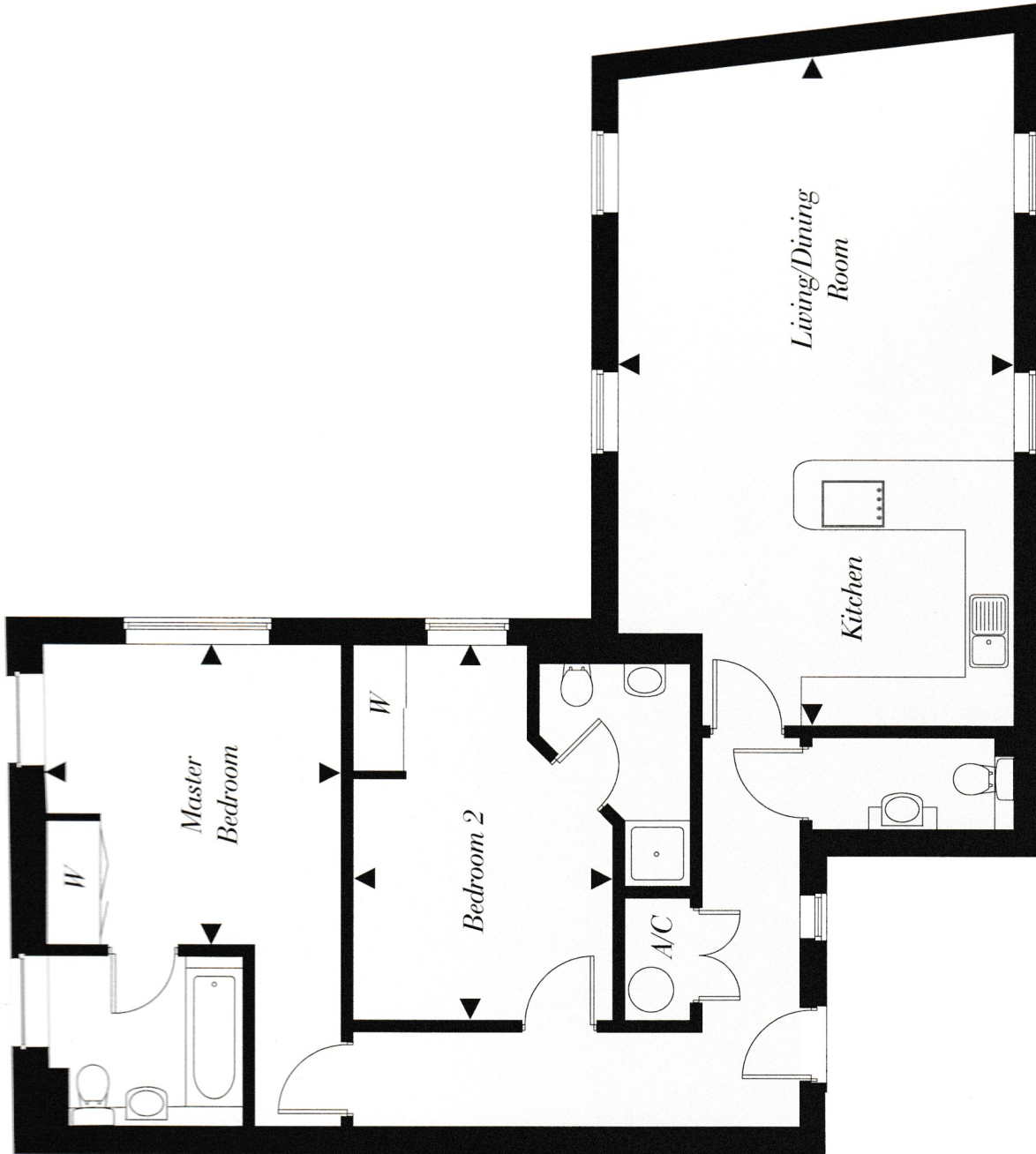




— ETON — THAMESIDE

First floor

Kitchen/Living/Dining Room	8.19m x 4.85m	26'9" x 15'9"
Master Bedroom	3.67m x 3.62m	12'0" x 11'9"
Bedroom 2	4.59m x 3.18m	15'0" x 10'3"



All measurements are approximate and where imperial measurements are shown, these are rounded to the nearest 3 inches. Whilst these particulars are prepared with due care for the convenience of intending purchasers, the information and images contained herein are intended as a preliminary guide only. They do not form part of any contract and the developer reserves the right to vary as necessary to complete the works. All designs may vary a little according to plot and all details should be checked at the sales office.