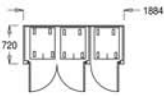
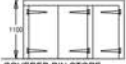


BRICK BUILT BIN HOUSING IN YELLOW STOCK BW TO MATCH THE DWELLING WITH SINGLE FLY (LEAD LOOK ALIKE) FLAT ROOF OVER. BLACK STAINED TIMBER DOORS



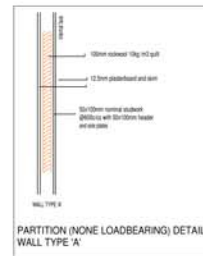
COVERED BIN STORE PLAN



COVERED BIN STORE FRONT ELEVATION



DETAIL 03
SUSPENDED TIMBER FLOOR
PROPOSED UPGRADING
USING ENVIROGRAF PRODUCT 53
- EXISTING LATH AND PLASTER CEILING RETAINED

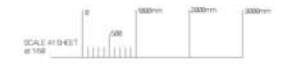


PARTITION (NONE LOADBEARING) DETAIL WALL TYPE 'A'

GENERAL ARRANGEMENT PROPOSED NO.8 CLARENCE ROAD three unit scheme



- REVE A PLANNING AMENDMENT NOV 2014
 REVISIONS
 Rev B: Elected Discharge application added
 Rev C: April 2013 Further consultation regarding retention and distribution of fireplaces
 Rev D: July 2013 additional notes added re fire and acoustic design details
 Rev E: August 2013 note added confirming removal of existing ground floor
 Rev F: May 2014 Revised to 3 unit scheme with new layout
 Rev G: Jan 2015 Basement amended as Storage
 Additional details provided re doorways to be retained, access form, ducted to chimney and upper dormery, and wallpaper to be retained
 Rev H: Additional photographs showing existing stairs and flat floor captured to head of stairs provided and confirmation of use of Envirograf product 53 reference to new suspended ceiling removed
 Note added to confirm re-opening of EXISTING doorway on first floor from kitchen into Living Room
 Note added to confirm re-opening of the existing stairs and the alteration to the upper level entrance to facilitate access



Project	8 Clarence Road	Revision	H	Drawn	PK
Client	SKANSKA	Date	02/2017	Scale	1:100 / 1:50
Drawing Title	GENERAL ARRANGEMENT PROPOSED 3 unit scheme	Project No.	11005_150	Drawing no.	
Job no.	572	Client	drmm consultancy ltd	Author	CHATTERJEE SURYAKANTH
			Building Design		
			Planning		
			1025.06		