

TURKS HEAD COURT  
HIGH STREET • ETON





## TURKS HEAD COURT HIGH STREET • ETON

An interesting freehold terraced property occupying a prime position in Eton with its own private garage. Internally this unique property is arranged over two floors extending to approximately 2280 square feet. The downstairs accommodation has a Lounge area at the front which leads through to an inner hallway with stairs to the first floor, large, long kitchen, breakfast room with a separate utility room. The upstairs is amazing with lots of character features, beamed ceilings, adaptable rooms with four bedrooms, two bathrooms, gas heating.







## *Location*

The historic town of Eton is renowned for being the location for Eton College and the main High Street has an array of shops, cafe bars, hotels, restaurants, delicatessens, art galleries and has one of the oldest properties located in the high street known as The Cock Pit that is presently undergoing a major refurbishment programme that will have its own Tavern, Gin Bar and Candle shop along with residential accommodation.

Windsor town centre is located just over the bridge that leads to Windsor Castle, the Theatre Royal along the hillrise into

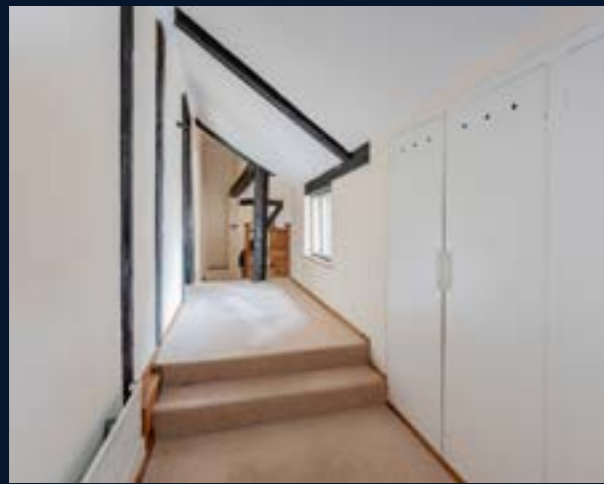
the main high street that offers many cafe bars, all types of restaurants, Daniels being the main store and the recently opened Five Guys restaurant.

There are two train stations, Windsor & Eton Riverside links to London Waterloo and Windsor links to Slough with fast trains into London Paddington.

Eton is an exceptional area for walking biking and rowing along the River Thames with the famous Brocas Fields and pathwalks that run along the river into Dorney and Maidenhead.









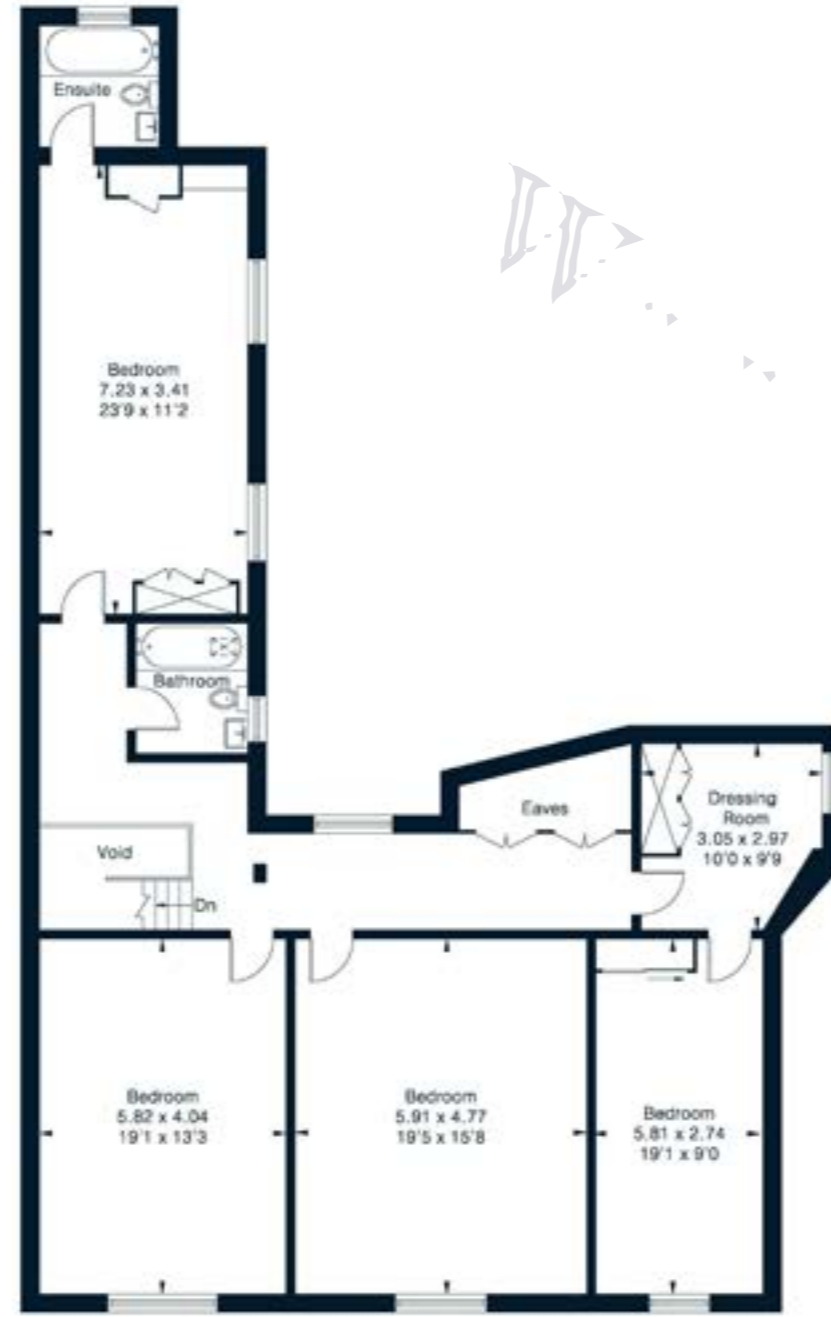




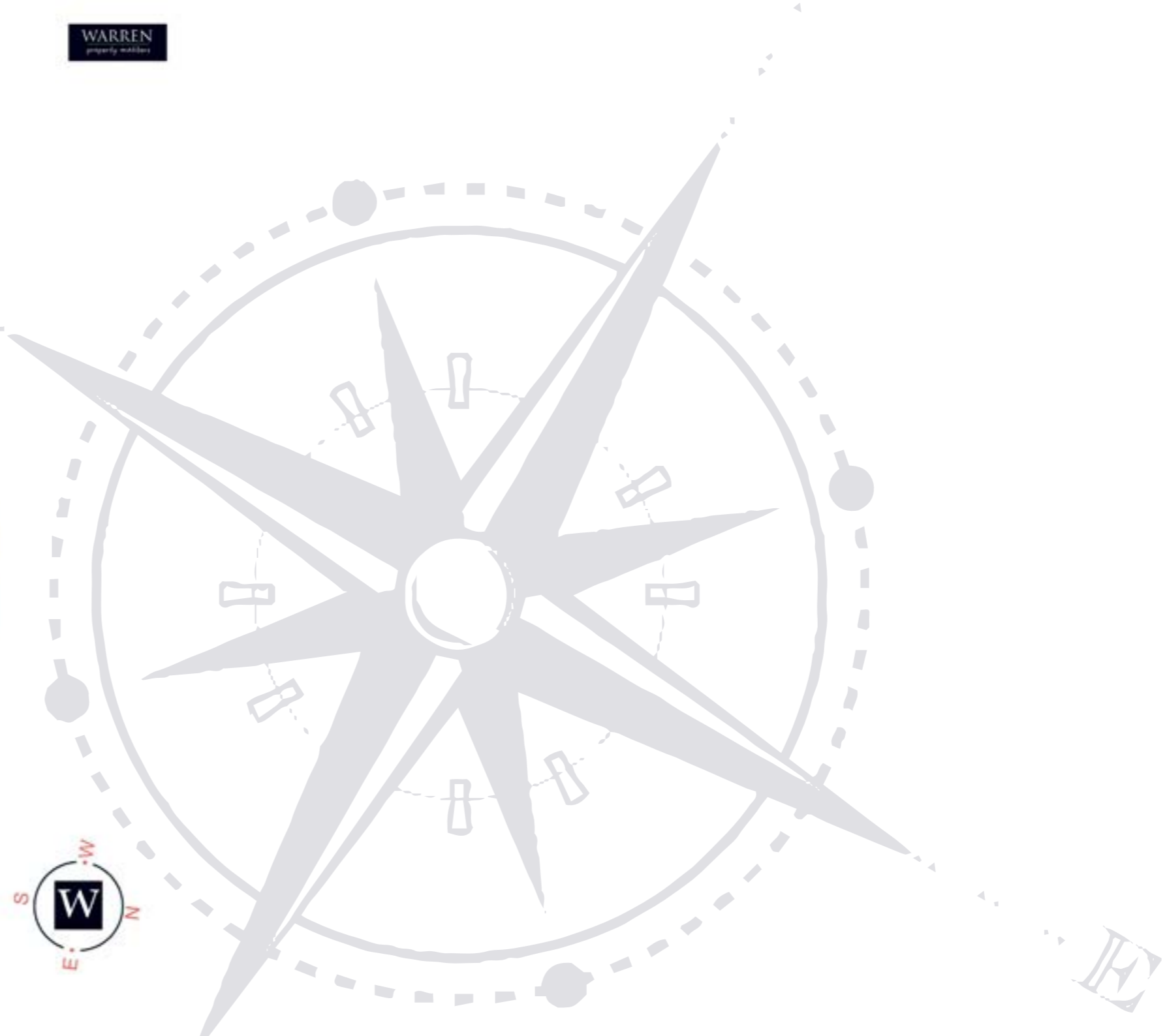
Turks Head Court, High Street, Eton, SL4  
Approximate Area = 211.88 sq m / 2280.65 sq ft



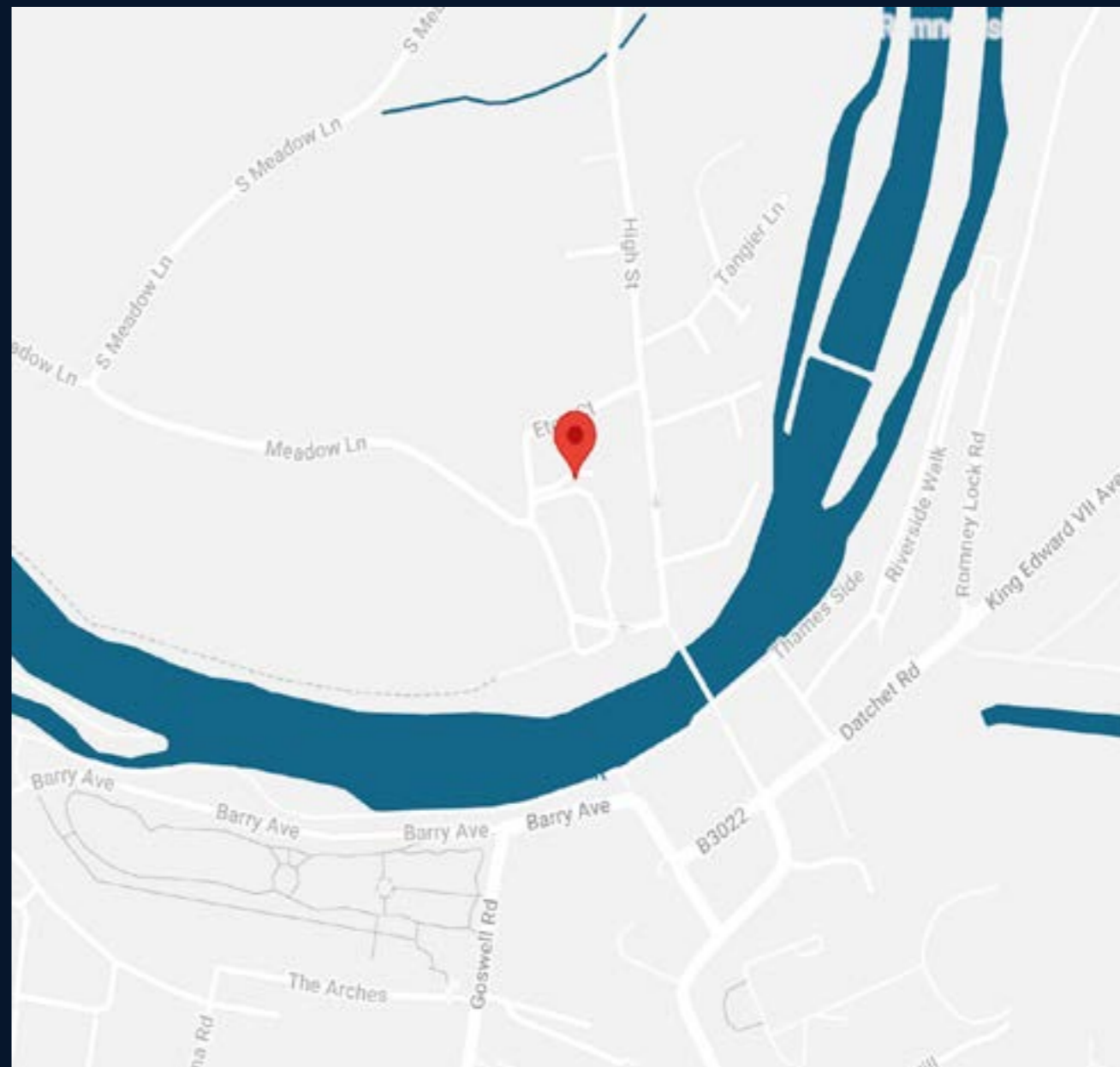
Ground Floor



First Floor







Sporting and leisure facilities in the region include golf at Wentworth, Sunningdale, The Berkshire & Swinley Forest golf clubs, horse racing at Windsor and Ascot, polo at the Royal County of Berkshire Polo Club and Guards Polo Club, flying at White Waltham Airfield, walking and riding in Windsor Great Park and the surrounding countryside, rowing at Maidenhead Rowing Club, Dorney Lake and Henley, and boating on some stretches of the River Thames. Educational opportunities are excellent and include St. George's Windsor Castle, Brigidine and Upton House in Windsor, St. George's, St. Mary's, Heathfield and Papplewick in Ascot, Lambrook in Winkfield Row, Eton College, Wellington College in Crowthorne and Royal Holloway in Egham. TISIS and ACS, both international schools, are also located in Egham.

#### Directions

For those with satellite navigation the postcode is: SL4 6AL

**WARREN**  
PROPERTY MATTERS

---

104-105 High Street, Eton, Berkshire SL4 6AF  
01753 625101 | [sales@warrenproperty.co.uk](mailto:sales@warrenproperty.co.uk)

[warrenproperty.co.uk](http://warrenproperty.co.uk)